



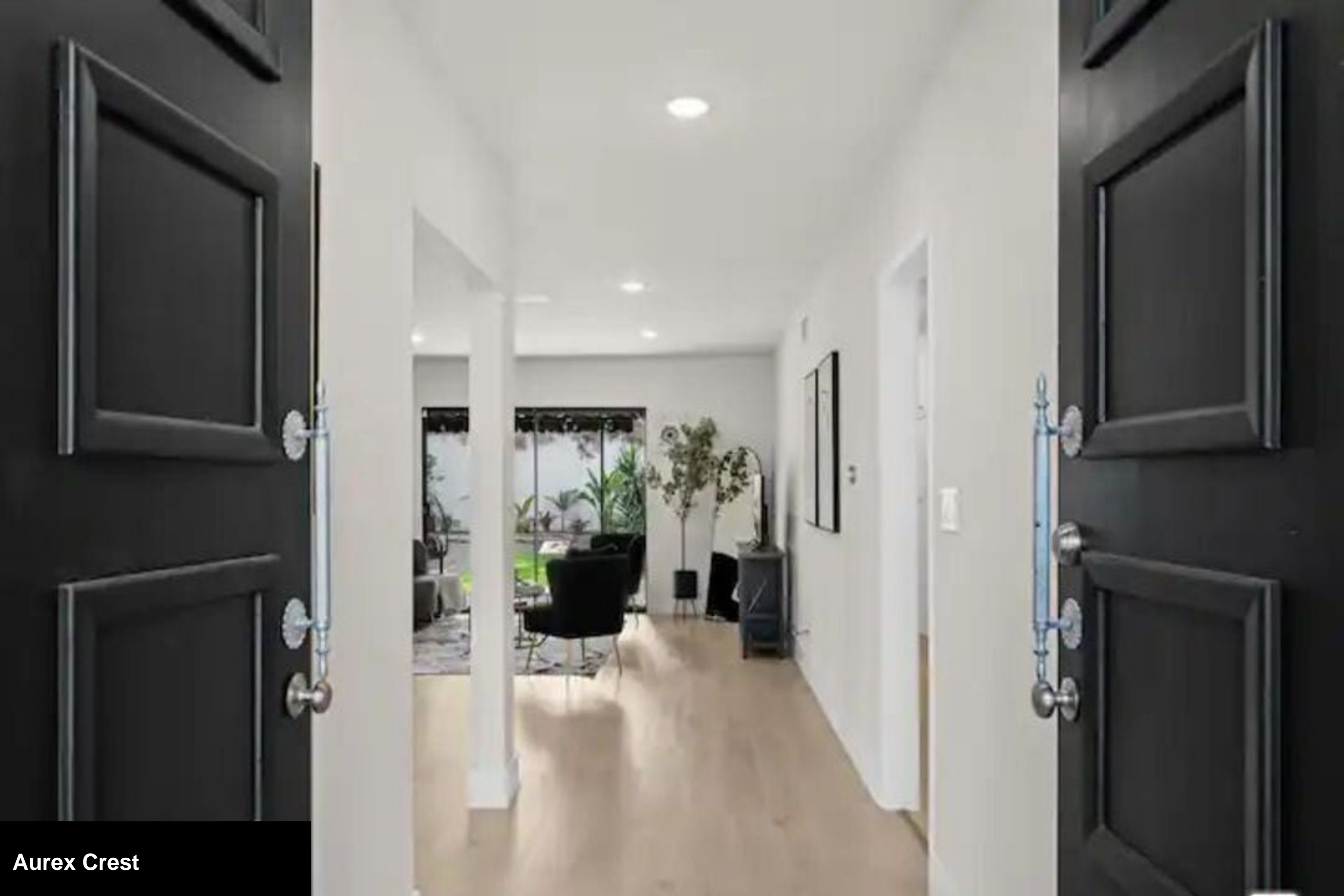
Aurex Crest

4
Bedrooms

3
Bathrooms

2,511
Living Area

8,401
Lot Area



Aurex Crest

Aurex Crest

Welcome to this beautifully maintained 4-bedroom, 3-bathroom single-family home nestled on a quiet, tree-lined street in the heart of Beverlywood. Situated on a generous 8,400 sq ft lot, this spacious 2,511 sq ft residence offers an ideal blend of comfort, functionality, and indoor-outdoor living. The open-concept floor plan is flooded with natural light, showcasing a seamless flow between the living, dining, and family areas perfect for both everyday living and entertaining. The home features four well-sized bedrooms, including a serene primary suite with its own private bath. Enjoy cooking in the thoughtfully designed kitchen, and step outside to your own private oasis: a beautifully landscaped backyard with a tranquil pond, mature greenery, and ample space for relaxation or gatherings. Located in one of the most desirable neighborhoods of Beverlywood, this single-level gem offers peace, privacy, and proximity to shops, dining, and top-rated schools. Don't miss this rare opportunity to own a move-in-ready home in one of LA's most sought-after communities!



**4
BEDS**



**3
BATHS**



**2,511 SQ.FT.
LIVING
AREA**



**8,401
SQ.FT.
LOT**

FEATURES & AMENITIES

INTERIOR

TOTAL BEDROOMS	4
TOTAL BATHROOMS	3
FULL BATHROOMS	3

EXTERIOR

STORIES	1
PARKING	2

AREA & LOT

STATUS	For Sale
LIVING AREA	2,511 Sq.Ft.
LOT AREA	8,401 Sq.Ft.
TYPE	Residential
YEAR BUILT	1962
NEIGHBORHOOD	Beverlywood
ARCHITECTURE STYLES	Modern
VIEW DESCRIPTION	Trees/Woods

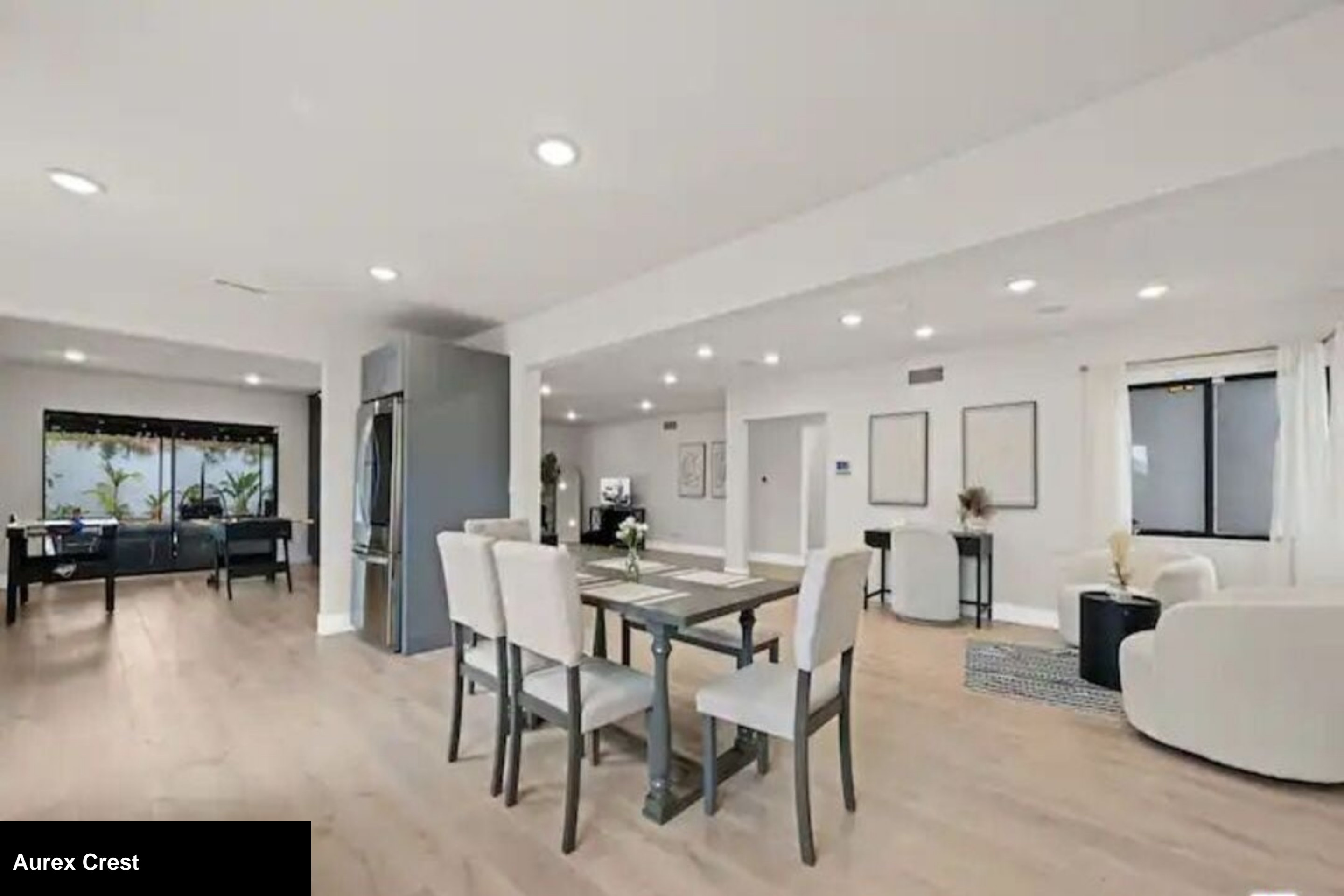




Aurex Crest





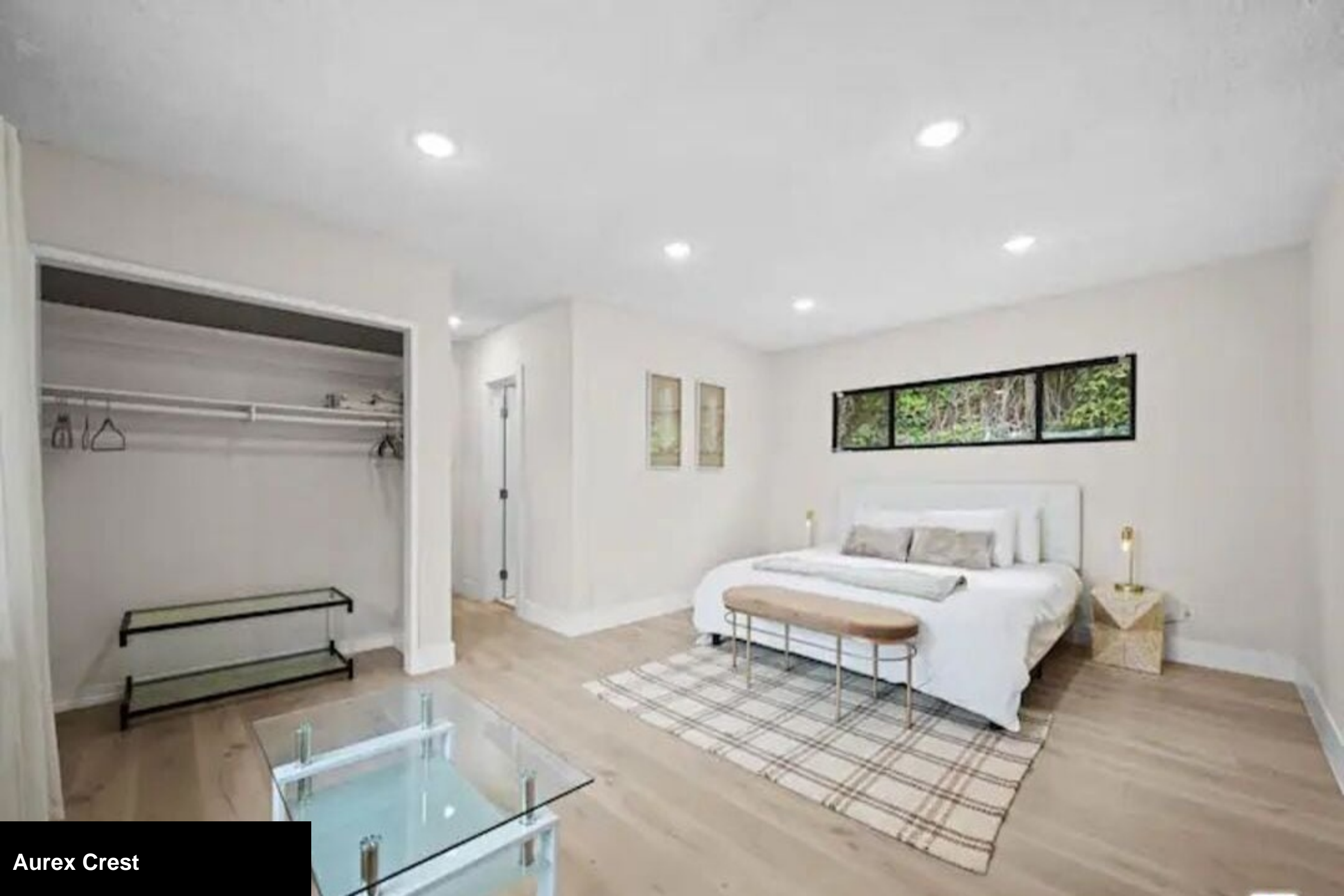








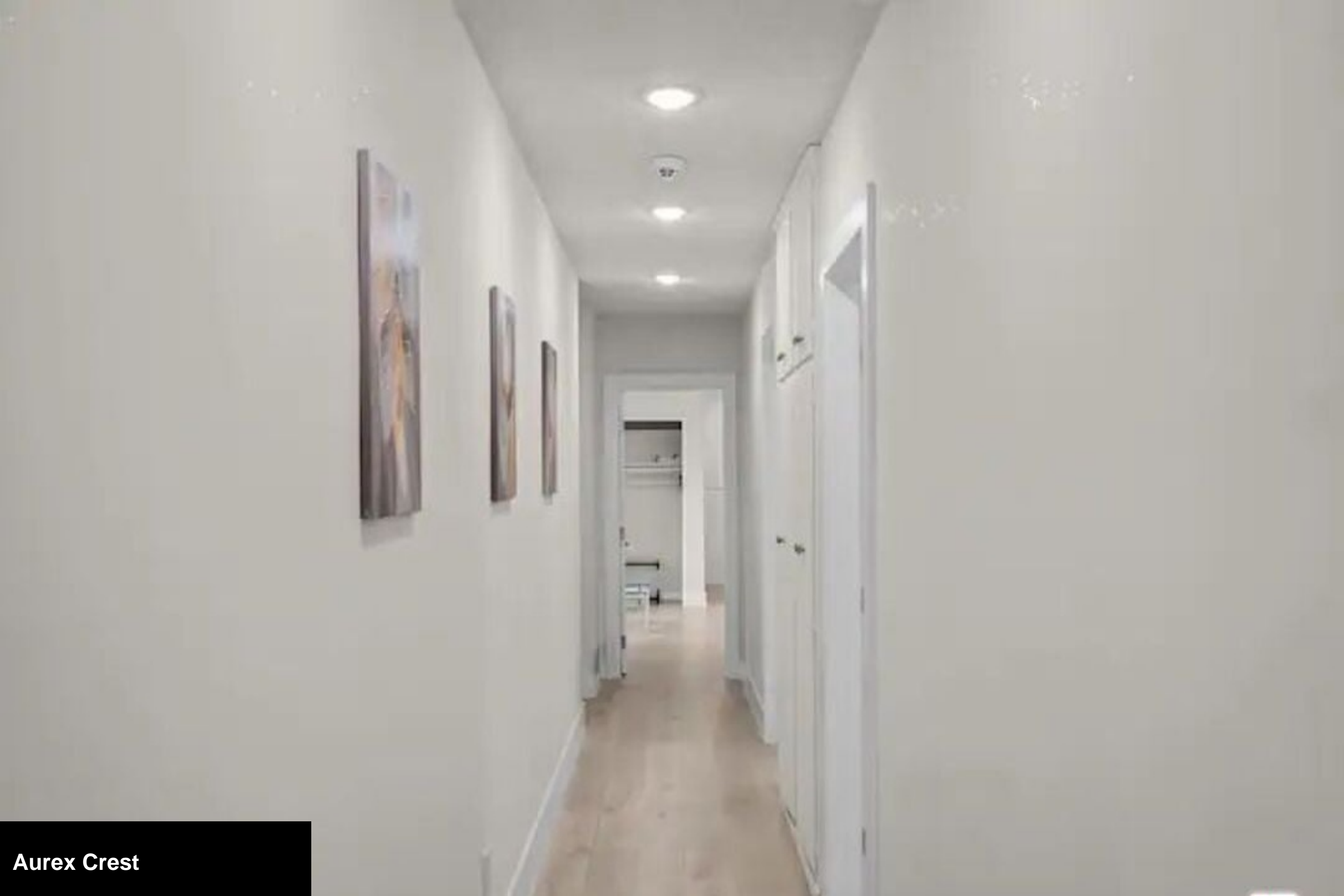








Aurex Crest





Aurex Crest







Aurex Crest



Aurex Crest





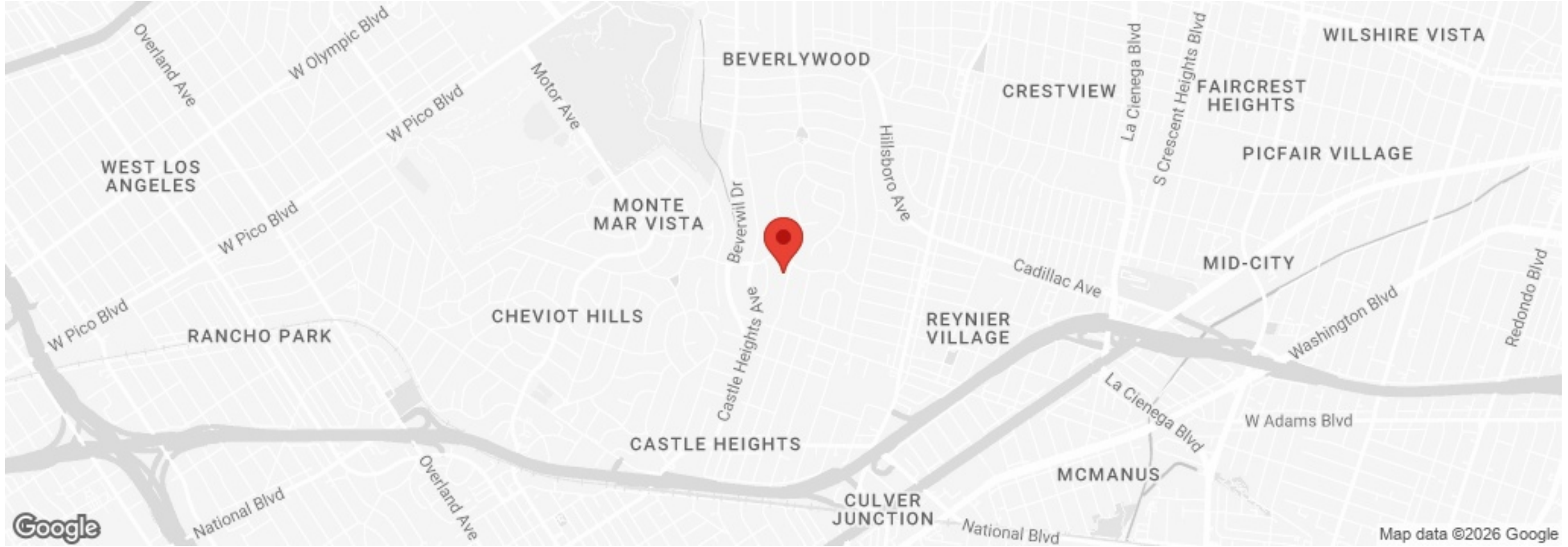
Aurex Crest



Aurex Crest



Aurex Crest



Aurex Crest